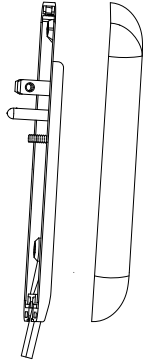


INSTALLATION INSTRUCTIONS



Model: LWE3-315 / LWE8-315 3 Outlets Extension Wallplate Plug

SPECIFICATIONS

Max Amps.....	13Amp, 125VAC, 60Hz
Max Wattage.....	1625W
Compatibility.....	Standard Duplex and Decorator
Cord Gauge.....	16AWG
Cord Lengths (available options).....	.3ft and 8ft

WARNING

Turn the power off at the circuit breaker before installing this device.

Read and understand these instructions before installing. This device is intended for installation in accordance with the National Electric Code and local regulations. It is recommended that a qualified electrician performs this installation. Make sure to turn off the circuit breaker or fuse(s) and make sure power is off before wiring the device.

Use copper wire only.

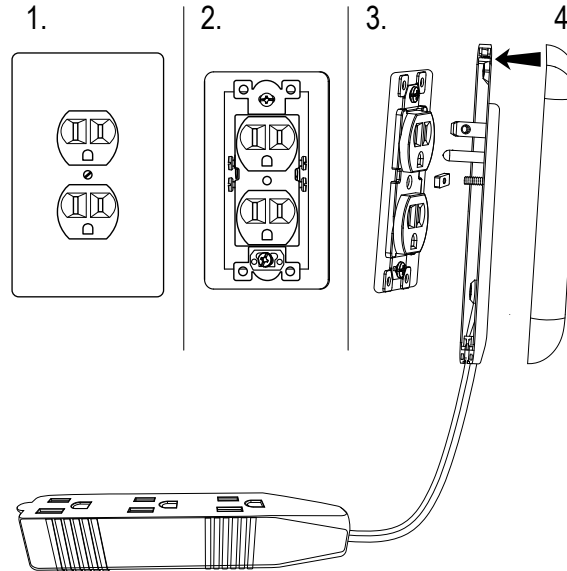
WARRANTY

This device is warranted to be free of material and workmanship defects for 1 year from the date of purchase. Original receipt or proof of purchase from an authorized retailer must be presented upon warranty claim. ALL claims must be verified and approved by Lider-Electric, Inc. Warranties from other Lider-Electric products may vary. This warranty is nontransferable and does not cover normal wear and tear or any malfunction, failure, or defect resulting from misuse, abuse, neglect, alteration, modification, or improper installation. To the fullest extent permitted by the applicable state law, Lider-Electric shall not be liable to the purchaser or end user customer of Lider-Electric products for direct, indirect, incidental, or consequential damages even if Lider-Electric has been advised of the possibility of such damages. Lider-Electric's total liability under this or any other warranty, express or implied, is limited to repair, replacement or refund. Repair, replacement or refund are the sole and exclusive remedies for breach of warranty or any other legal theory.

INSTALLATION

For Standard (duplex) "oval" shaped receptacles:

1. Remove the wall plate
2. Insert mounting screw through the installation frame and place rectangular bushing over threads of screw
3. Plug in installation frame and secure with the installation screw
4. Snap outer wallplate cover onto installation frame
5. Use provided cable management clips to organize the attached extension cord.



For Decorator receptacles:

1. Remove the wall plate
2. Insert mounting screw through the installation frame and place rectangular bushing over threads of screw
3. Plug in installation frame and secure with the installation screw
4. Snap outer wallplate cover onto installation frame
5. Use provided cable management clips to organize the attached extension cord.

