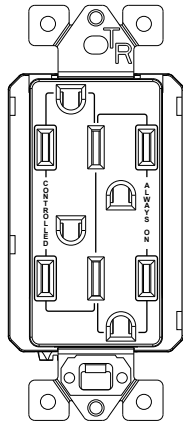


INSTALLATION INSTRUCTIONS

WIRING DIRECTIONS

Model: LR15-4TRPL
15A Decorator Tamper-Resistant
Receptacle with One side Always On,
One side Controlled



FEATURES

- 15A 125VAC Outlets: one side Always On, one side Controlled
- Tamper-Resistant shutters are 2020 and older NEC compliant
- Wire insert terminals are designed for easy installation from back
- UL Listed

SPECIFICATIONS

Receptacle Rating.....15 Amp, 125VAC
 Wire Terminals.....#14-#12 AWG Solid Wire
 Strip Length for clamp type terminals.....0.5 inch

WARNING

Turn the power off at the circuit breaker before installing this device.

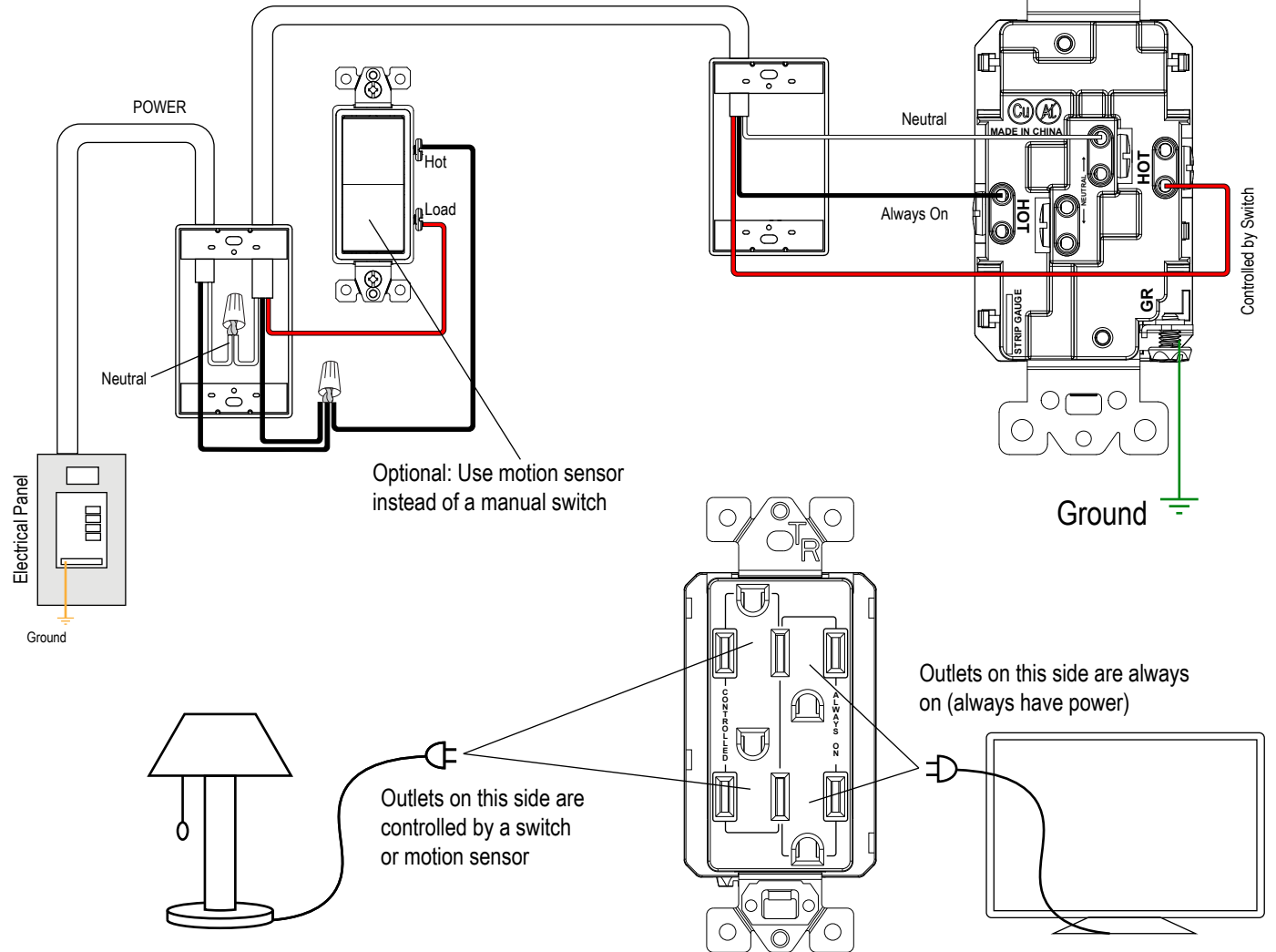
Read and understand these instructions before installing. This device is intended for installation in accordance with the National Electric Code and local regulations. It is recommended that a qualified electrician performs this installation. Make sure to turn off the circuit breaker or fuse(s) and make sure power is off before wiring the device.

Use copper wire only.

WARRANTY

This device is warranted to be free of material and workmanship defects for 1 year from the date of purchase. Original receipt or proof of purchase from an authorized retailer must be presented upon warranty claim. ALL claims must be verified and approved by Lider-Electric, Inc. Warranties from other Lider-Electric products may vary. This warranty is nontransferable and does not cover normal wear and tear or any malfunction, failure, or defect resulting from misuse, abuse, neglect, alteration, modification, or improper installation. To the fullest extent permitted by the applicable state law, Lider-Electric shall not be liable to the purchaser or end user customer of Lider-Electric products for direct, indirect, incidental, or consequential damages even if Lider-Electric has been advised of the possibility of such damages. Lider-Electric's total liability under this or any other warranty, express or implied, is limited to repair, replacement or refund. Repair, replacement or refund are the sole and exclusive remedies for breach of warranty or any other legal theory

1. Identify the HOT, NEUTRAL, LOAD and GROUND wires in the wall box
2. Remove existing receptacle
3. Insert wires into the terminal holes on the back side of the receptacle as shown in diagram below, then tighten the terminal screws to clamp wires in place



LIDCOR®

©2022 Lider-Electric, Inc. • CA, USA • www.Lider-Electric.com • 0211220183-01